

How to find QCI Order No?

01 - 5030 - 050 STR

Product Type 01 : Stylus 02 : Extension 03 : Knuckle & Cube 05 : Adapter	Thread 2 : M2 3 : M3 4 : M4 5 : M5	DB Stylus Diameter Extension Diameter	Lenth of stylus Total Length	Materials for Holder, Shaft & Ball TTR : Titanium, Tungsten & Ruby STR : Steel, Tungsten & Ruby TCR : Titanium, Carbon & Ruby SCR : Steel, Carbon & Ruby CC : Carbon & Ceramic CS : Crabon & Steel CE : Ceramic & Steel SR : Steel & Ruby SC : Steel & Ceramic
---	---	--	--	--

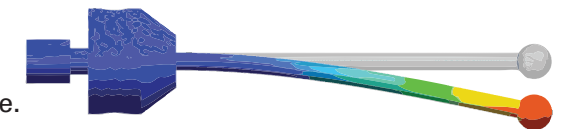
Accuracy of Ball

QCI Stylus used 5 ball grade according to AMBA Ball Grade.

AMBA Grade	Round Dia Tolerance	Basic Dia Tolerance	Surface Roughness
3	0.06 μm	$\pm .75 \mu\text{m}$	0.012
5	0.13 μm	+ 1.25 μm / - 1 μm	0.02
10	0.25 μm	+ 1.25 μm / - 1 μm	0.025
16	0.4 μm	+ 1.25 μm / - 1 μm	0.025
24	0.6 μm	$\pm 2.5 \mu\text{m}$	0.05

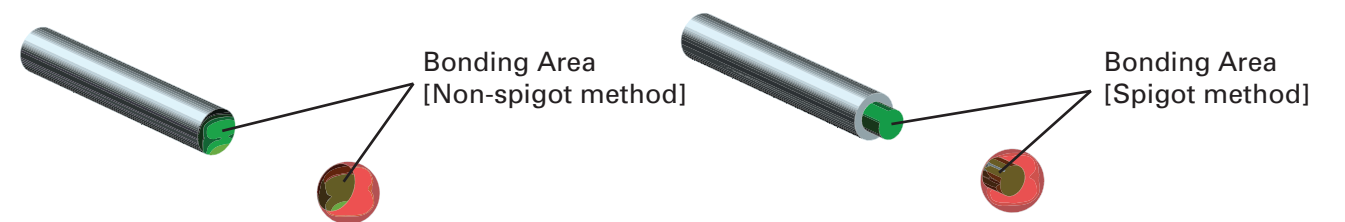
Bending & Deflection

QCI Stylus was designed for minimizing the deformation of shaft caused by measuring force.



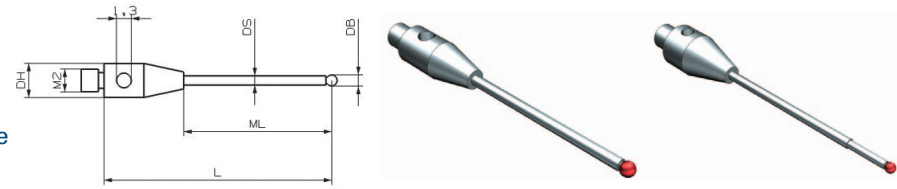
Assembly

QCI used [Spigot method] when assembling shaft and ball. This method is increased bonding area approximately 180% more than [Non-spigot method]. therefore we minimized drop of ball after assembly.



Carbide Stylus

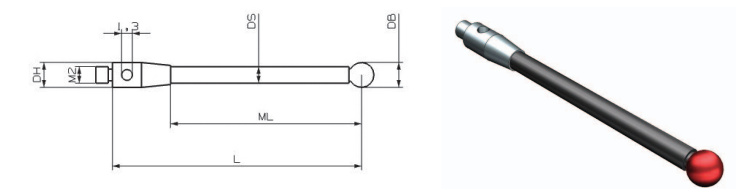
Base - Stainless Steel
 Shaft - Tungsten Carbide
 Tip - Ruby Ball



QCI No.	DB	L	MLE	ML	DSE	DS	DH
01-2003-010STR	0.3	10	2	3	0.2	0.8	3
01-2005-010STR	0.5	10		3	0.3	0.8	3
01-2005-020LTR	0.5	20		7	0.3	0.8	3
01-2007-010STR	0.7	10		3	0.5	0.8	3
01-2007-020STR	0.7	20		13	0.5	0.8	3
01-2010-010STR	1	10		3		0.8	3
01-2010-020LTR	1	20		7		0.8	3
01-2010-020STR	1	20		13		0.8	3
01-2010-028STR	1	27.5		20.5		0.8	3
01-2015-020STR	1.5	20		13		1	3
01-2015-030STR	1.5	30		23		1	3
01-2020-020STR	2	20		13		1	3
01-2020-030STR	2	30		23		1.5	3
01-2020-040STR	2	40		33		1.5	3
01-2025-020STR	2.5	20		13		1.5	3
01-2025-030STR	2.5	30		23		2	3
01-2025-040STR	2.5	40		33		2	3
01-2030-020STR	3	20		13		2	3
01-2030-030STR	3	30		23		2	3
01-2030-040STR	3	40		33		2	3
01-2030-050STR	3	50		43		2	3
01-2040-015STR	4	15		8		2	3
01-2040-022STR	4	22		15		2	3
01-2040-030STR	4	30		23		2	3
01-2040-040STR	4	40		33		2	3
01-2040-050STR	4	50		43		2	3
01-2050-010STR	5	10		3	2.5	2.5	3
01-2050-020STR	5	20		13	2.5	2.5	3
01-2050-030STR	5	30		23	2.5	2.5	3
01-2050-040STR	5	40		33	2.5	2.5	3
01-2050-050STR	5	50		43	2.5	2.5	3
01-2060-016STR	6	16		9		3	3

Carbon Stylus

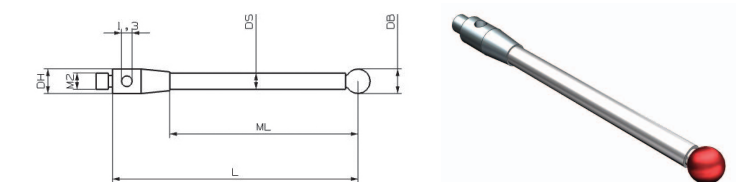
Base - Stainless Steel
 Shaft - Carbon Fiber
 Tip - Ruby Ball



QCI No.	DB	L	ML	DS	DH
01-2030-030SCR	3	30	23	2	3
01-2030-040SCR	3	40	33	2	3
01-2030-050SCR	3	50	43	2	3
01-2040-030SCR	4	30	23	2	3
01-2040-050SCR	4	50	43	3	3
01-2040-075SCR	4	75	68	3	3
01-2040-100SCR	4	100	93	3	3
01-2050-030SCR	5	30	23	3	3
01-2050-050SCR	5	50	43	3	3
01-2050-075SCR	5	75	68	3	3
01-2050-100SCR	5	100	93	3	3
01-2060-030SCR	6	30	23	3	3
01-2060-050SCR	6	50	43	3	3
01-2060-075SCR	6	75	68	3	3
01-2060-100SCR	6	100	93	3	3

Ceramic Stylus

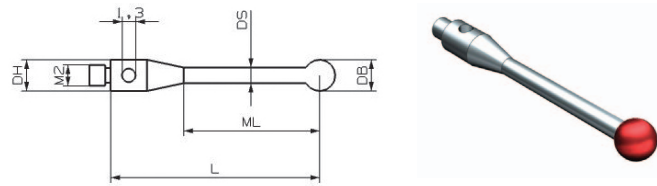
Base - Stainless Steel
 Shaft - Ceramic
 Tip - Ruby Ball



QCI No.	DB	L	ML	DS	DH
01-2030-030SCE	3	30	23	2	3
01-2030-050SCE	3	50	43	2	3
01-2040-030SCE	4	30	23	2	3
01-2040-050SCE	4	50	43	2	3
01-2050-030SCE	5	30	23	2.5	3
01-2050-050SCE	5	50	43	2.5	3
01-2060-030SCE	6	30	23	3	3
01-2060-050SCE	6	50	43	3	3

Steel Stylus

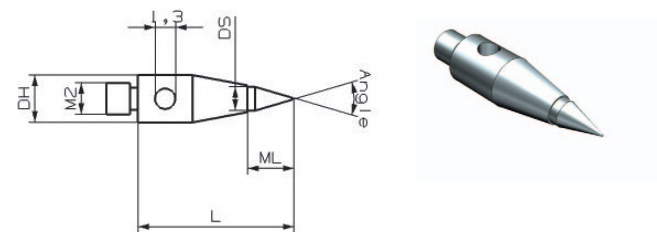
Base - Stainless Steel
Shaft - Stainless Steel
Tip - Ruby Ball



QCI No.	DB	L	ML	DS	DH
01-2015-010SSR	1.5	10	3	0.75	3
01-2020-010SSR	2	10	3	1	3
01-2020-020SSR	2	20	13	1.5	3
01-2025-010SSR	2.5	10	3	1.25	3
01-2025-020SSR	2.5	20	13	1.25	3
01-2030-010SSR	3	10	3	1.5	3
01-2030-020SSR	3	20	13	1.5	3
01-2040-010SSR	4	10	3	2	3
01-2040-020SSR	4	20	13	2	3
01-2050-010SSR	5	10	3	2.5	3
01-2060-010SSR	6	10	3	3	3
01-2080-011SSR	8	11	4	3	3

Point Stylus

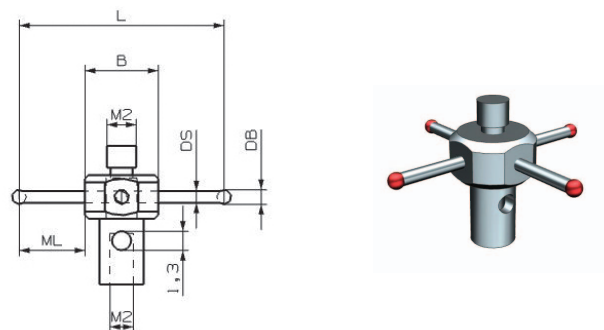
Base - Stainless Steel
Shaft - Tungsten Carbide
Tip - Tungsten Carbide



QCI No.	Agl.	L	ML	DS	DH
01-2000-010STTP	30	10	3	1	3

Star Stylus

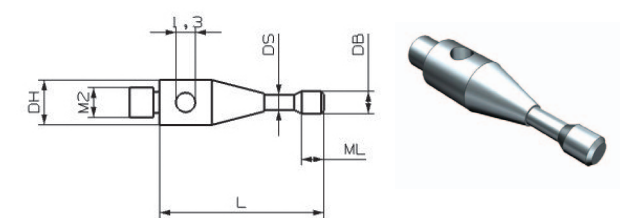
Base & Cube - Stainless Steel
Shaft - Tungsten Carbide
Tip - Ruby Ball



QCI No.	DB	L	ML	DS	DH
01-2005-010STR-STAR	0.5	10	2.5	5	0.3
01-2005-020STR-STAR	0.5	20	7.5	5	0.3
01-2010-010STR-STAR	1	10	2.5	5	0.8
01-2010-020STR-STAR	1	20	7.5	5	0.8
01-2020-020STR-STAR	2	20	3.5	6	1.5
01-2020-030STR-STAR	2	30	8.5	6	1.5

Flat ended Cylinder Stylus

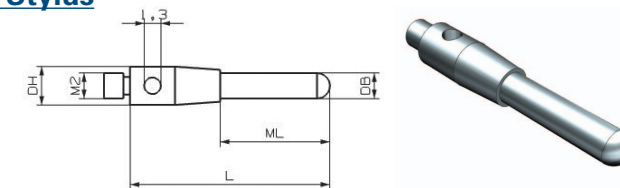
Base - Stainless Steel
Shaft - Tungsten Carbide
Tip - Tungsten Carbide



QCI No.	DB	L	ML	DS	DH
01-2015-011STTF	1.5	11	1.5	1	3
01-2030-013STTF	3	13	4	1.5	3

Half Sphere ended Cylinder Stylus

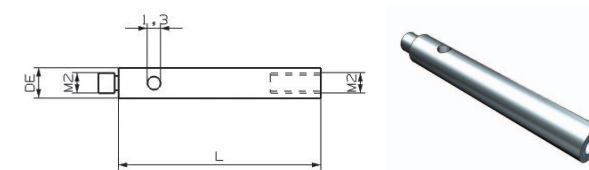
Base - Stainless Steel
Shaft - Tungsten Carbide



QCI No.	DB	L	ML	DH
01-2010-036STTR	1	35.5	28	3
01-2015-016STTR	1.5	15.8	8.3	3
01-2020-015STTR	2	16	8.5	3
01-2020-040STTR	2	40	32	3

Steel Extension

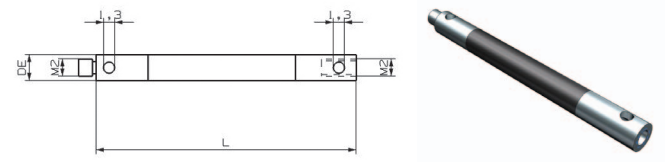
Base - Stainless Steel



QCI No.	DE	L
02-2030-005ST	3	5
02-2030-010ST	3	10
02-2030-020ST	3	20
02-2030-030ST	3	30
02-2030-040ST	3	40

Carbon Extension

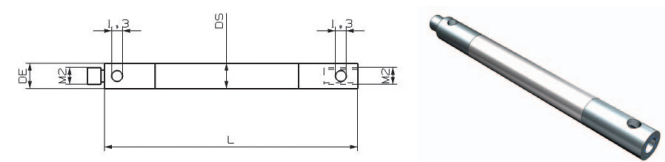
Base - Stainless Steel
Shaft - Carbon Fiber



QCI No.	DE	L
02-2035-030SCF	3.5	30
02-2035-040SCF	3.5	40
02-2035-050SCF	3.5	50
02-2035-070SCF	3.5	70
02-2035-090SCF	3.5	90

Ceramic Extension

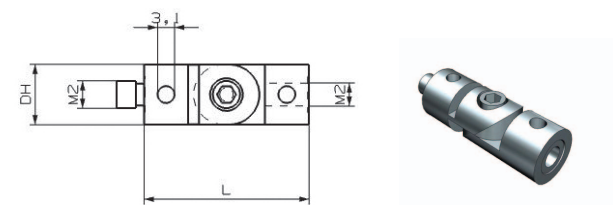
Base - Stainless Steel
Shaft - Ceramic



QCI No.	DE	L	DS
02-2030-030SCT	3.5	30	3
02-2030-040SCT	3.5	40	3
02-2030-050SCT	3.5	50	3
02-2030-060SCT	3.5	60	3

Knuckle Joint

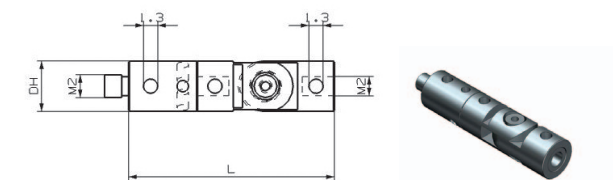
Body - Stainless Steel



QCI No.	DH	L	Offset
03-2060-008ST		8	4.5
03-2030-014ST	4	13.5	

Rotary Knuckle Joint

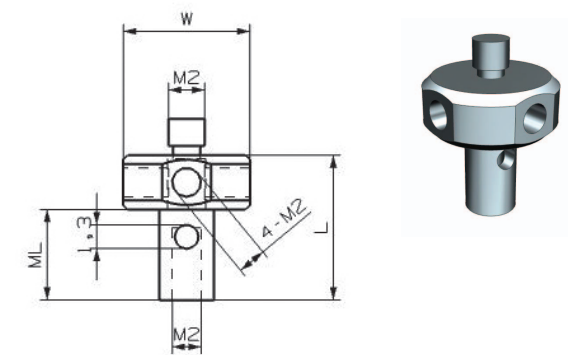
Body - Stainless Steel



QCI No.	DH	L
03-2040-017ST	4	16.5

5-Way

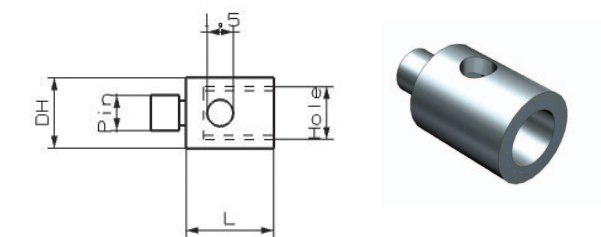
Base - Stainless Steel
Cube - Stainless Steel



QCI No.	W	L	ML	DH
03-2070-008ST	7	8	5	3

Thread Converter

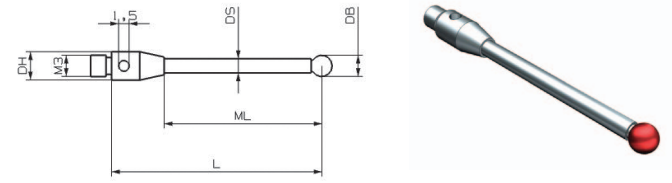
Base - Stainless Steel



QCI No.	Pin	Hole	L	DH
05-3040-005M2	M3	M2	5	4
05-2040-005M3	M2	M3	5	4
05-2040-007M3	M2	M3	7	4

Carbide Stylus

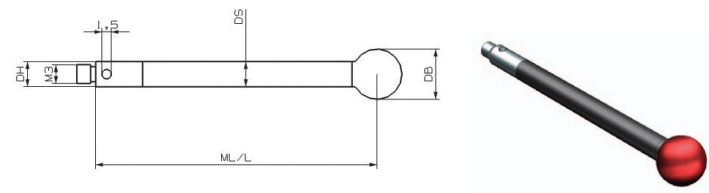
Base - Stainless Steel
 Shaft - Tungsten Carbide
 Tip - Ruby Ball



QCI No.	DB	L	MLE	ML	DSE	DS	DH
01-3005-021LTR	0.5	21		2		0.3	4
01-3010-010STR	1	10		5		0.8	4
01-3015-020STR	1.5	20		12.5		1	4
01-3015-030STR	1.5	30		22.5		1	4
01-3020-020STR	2	20		12.5		1	4
01-3020-030STR	2	30		22.5		1.5	4
01-3020-040STR	2	40		32.5		1.5	4
01-3025-020STR	2.5	20		12.5		2	4
01-3025-030STR	2.5	30		22.5		2	4
01-3025-040STR	2.5	40		32.5		2	4
01-3030-020STR	3	20		12.5		1.5	4
01-3030-030STR	3	30		22.5		2	4
01-3030-040STR	3	40		32.5		2	4
01-3030-050STR	3	50		42.5		2	4
01-3040-040STR	4	40		32.5		2	4
01-3040-050STR	4	50		42.5		2	4
01-3050-040STR	5	40		32.5		2.5	4
01-3050-050STR	5	50		42.5		2.5	4

Carbon Stylus

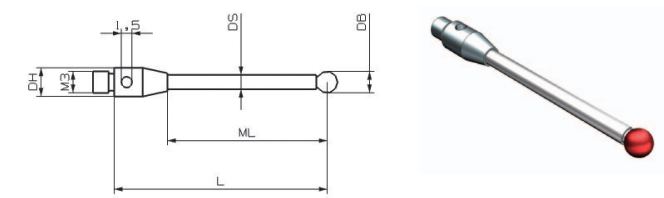
Base - Stainless Steel
 Shaft - Carbon Fiber
 Tip - Ruby Ball



QCI No.	DB	L	ML	DS	DH
01-3060-075SCR	6	75	65	4	4
01-3060-100SCR	6	100	90	4	4
01-3080-075SCR	8	75	65	4	4
01-3080-100SCR	8	100	90	4	4

Ceramic Stylus

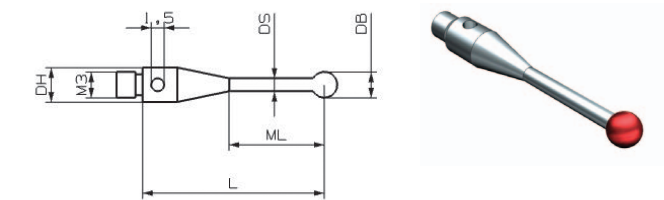
Base - Stainless Steel
 Shaft - Ceramic
 Tip - Ruby Ball



QCI No.	DB	L	ML	DS	DH
01-3030-050SCE	3	50	42.5	2	4
01-3040-050SCE	4	50	42.5	2	4
01-3050-050SCE	5	50	42.5	2.5	4

Steel Stylus

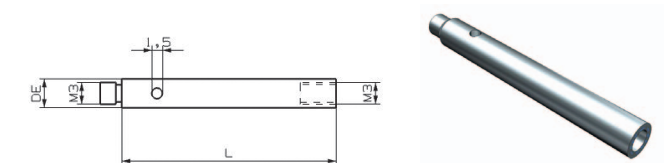
Base - Stainless Steel
 Shaft - Stainless Steel
 Tip - Ruby Ball



QCI No.	DB	L	ML	DS	DH
01-3020-021SSR	2	21	8	1.5	4
01-3030-012SSR	3	10	5.5	1.5	4
01-3030-021SSR	3	21	11	2	4
01-3040-021SSR	4	21	11	2.5	4
01-3040-031SSR	4	31	21	2.5	4
01-3050-021SSR	5	21	21	2.5	4
01-3050-031SSR	5	31	31	3.5	4
01-3060-013SSR	6	10	5.5	3	4

Steel Extension

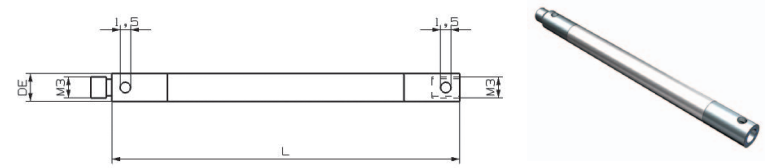
Base - Stainless Steel



QCI No.	L	DE
02-3040-010ST	10	4
02-3040-020ST	20	4
02-3040-030ST	30	4
02-3040-035ST	35	4
02-3040-040ST	40	4
02-3040-050ST	50	4

Ceramic Extension

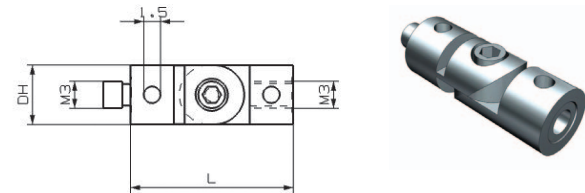
Base - Stainless Steel
Shaft - Ceramic



QCI No.	L	DS	DE
02-3040-050SCT	50	4	4
02-3040-075SCT	75	4	4
02-3040-100SCT	100	4	4

Knuckle Joint

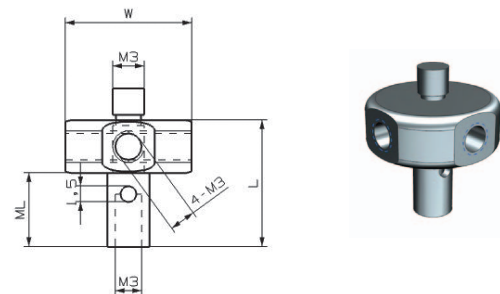
Body - Stainless Steel



QCI No.	L	ML	DH
03-3060-012ST	12	6	4

5-Way

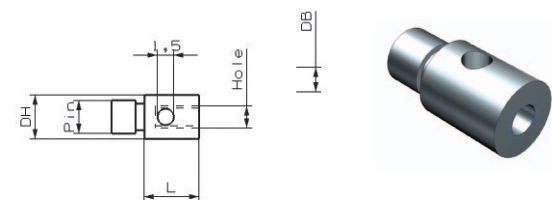
Base - Stainless Steel
Cube - Stainless Steel



QCI No.	W	L	ML	DH
03-3120-012ST	12	12	7	4

Thread Converter

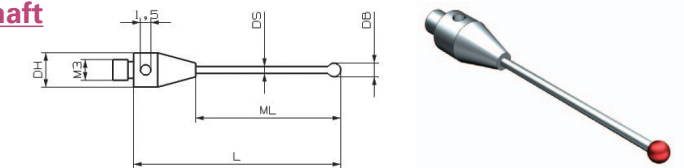
Base - Stainless Steel



QCI No.	Pin	Hole	L	DH
05-3040-005M2	M3	M2	5	4
05-2040-005M3	M2	M3	5	4
05-2040-007M3	M2	M3	7	4

Carbide Stylus, Straight Shaft

Base - Titanium
Shaft - Tungsten Carbide
Tip - Ruby Ball

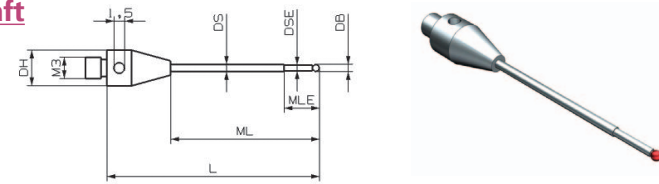


QCI No.	DB	L	ML	DS	DH
01-3008-014TTR	0.8	14	5	0.6	5
01-3010-014TTR	1	14	5	0.8	5
01-3010-017TTR	1	17	9	0.8	5
01-3010-020TTR	1	20	11	0.8	5
*01-3010-040TTR	1	40	31	0.8	5
01-3015-014TTR	1.5	14	5	1	5
01-3015-017TTR	1.5	17	8	1	5
01-3015-020TTR	1.5	20	11	1	5
01-3015-025TTR	1.5	25	16	1	5
01-3015-030TTR	1.5	30	21	1	5
01-3015-035TTR	1.5	35	26	1	5
01-3015-040TTR	1.5	40	31	1	5
01-3020-014TTR	2	14	5	1	5
01-3020-017TTR	2	17	8	1	5
01-3020-020TTR	2	20	11	1	5
01-3020-025TTR	2	25	16	1	5
01-3020-030TTR	2	30	21	1	5
01-3020-035TTR	2	35	26	1.5	5
01-3020-040TTR	2	40	31	1.5	5
01-3020-050TTR	2	50	41	1.5	5
01-3020-060TTR	2	60	51	1.5	5
01-3025-020TTR	2.5	20	11	1.5	5
01-3025-025TTR	2.5	25	16	1.5	5
01-3025-030TTR	2.5	30	21	1.5	5
01-3025-035TTR	2.5	35	26	1.5	5
01-3025-040TTR	2.5	40	31	1.5	5
01-3030-040TTR	3	40	31	2	5
01-3030-050TTR	3	50	41	2	5
01-3040-030TTR	4	30	21	2	5
01-3040-040TTR	4	40	31	2	5
01-3040-050TTR	4	50	41	2	5
01-3050-030TTR	5	30	21	2.5	5
01-3050-040TTR	5	40	31	2.5	5
01-3050-050TTR	5	50	41	3	5
01-3050-060TTR	5	60	51	3	5
01-3060-028TTR	6	28	18	3	5
01-3060-030TTR	6	30	21	3	5
01-3060-040TTR	6	40	31	3	5
01-3060-050TTR	6	50	41	3	5
01-3060-053TTR	6	53	46	3	5

*는 사용에 제한이 있는 경우가 있으므로 확인 후 사용하시기 바랍니다.

Carbide Stylus, Stepped Shaft

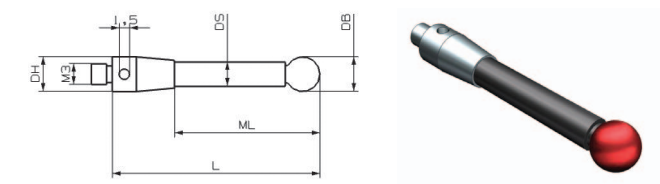
Base - Titanium
 Shaft - Tungsten Carbide
 Tip - Ruby Ball



QCI No.	DB	L	MLE	ML	DSE	DS	DH
01-3003-013TTR	0.3	13	2.3	4	0.2	1	5
01-3003-015TTR	0.3	15	2.3	6	0.2	1	5
01-3003-018TTR	0.3	18	2.3	9	0.2	1	5
01-3003-020TTR	0.3	20	2.3	11	0.2	1	5
01-3005-013TTR	0.5	13	2.3	4	0.3	1	5
01-3005-015TTR	0.5	15	2.3	6	0.3	1	5
01-3005-018TTR	0.5	18	2.3	9	0.3	1	5
01-3005-020TTR	0.5	20	2.3	11	0.3	1	5
01-3005-024TTR	0.5	24	2.3	15	0.3	1	5
01-3008-017TTR	0.8	17	4.8	8	0.6	1	5
01-3008-020TTR	0.8	20	4.8	11	0.6	1	5
01-3008-025TTR	0.8	25	4.8	16	0.6	1	5
01-3008-030TTR	0.8	30	4.8	21	0.6	1	5
01-3008-035TTR	0.8	35	4.8	26	0.6	1	5
01-3010-020TTR	1	20	5	11	0.8	1	5
01-3010-025TTR	1	25	5	16	0.8	1	5
01-3010-030TTR	1	30	5	21	0.8	1	5
01-3010-035TTR	1	35	5	26	0.8	1	5
01-3010-040TTR2	1	40	5	31	0.8	1	5

Carbon Stylus

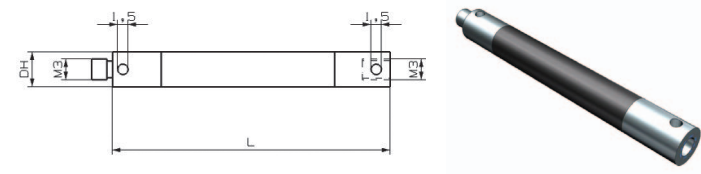
Base - Titanium
 Shaft - Carbon Fiber
 Tip - Ruby Ball



QCI No.	DB	L	ML	DS	DH
01-3030-025TCR	3	25	16	2	5
01-3030-033TCR	3	33	24	2	5
01-3030-040TCR	3	40	31	2	5
01-3030-042TCR	3	42	33	2	5
01-3030-050TCR	3	50	41	2	5
01-3030-058TCR	3	58	49	2	5
01-3030-059TCR	3	59	50	2	5
01-3030-065TCR	3	65	56	2	5
01-3030-075TCR	3	75	66	2	5
01-3030-084TCR	3	84	75	2	5
01-3030-100TCR	3	100	91	2	5
01-3030-125TCR	3	125	116	2	5
01-3040-050TCR	4	50	41	2	5
01-3040-075TCR	4	75	66	3	5
01-3050-030TCR	5	30	21	3.5	5
01-3050-040TCR	5	40	31	3.5	5
01-3050-050TCR	5	50	41	3.5	5
01-3050-060TCR	5	60	51	3.5	5
01-3050-075TCR	5	75	66	3.5	5
01-3050-090TCR	5	90	81	3.5	5
01-3050-125TCR	5	125	116	3.5	5
01-3060-050TCR	6	50	41	3.5	5
01-3060-070TCR	6	70	61	3.5	5
01-3060-100TCR	6	100	91	3.5	5
01-3080-030TCR	8	30	21	5	5
01-3080-050TCR	8	50	41	5	5
01-3080-070TCR	8	70	61	5	5
01-3080-100TCR	8	100	91	5	5
01-3080-125TCR	8	125	116	5	5

Carbon Extension

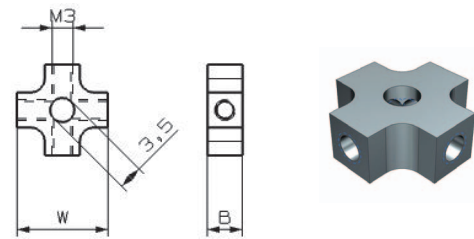
Base - Titanium
Shaft - Carbon Fiber



QCI No.	L	DE
02-3050-030TCF	30	5
02-3050-040TCF	40	5
02-3050-050TCF	50	5
02-3050-060TCF	60	5
02-3050-065TCF	65	5
02-3050-070TCF	70	5
02-3050-075TCF	75	5
02-3050-080TCF	80	5
02-3050-090TCF	90	5
02-3050-100TCF	100	5
02-3050-110TCF	110	5
02-3050-120TCF	120	5
02-3050-130TCF	130	5
02-3050-140TCF	140	5
02-3050-150TCF	150	5

4-Face Cube

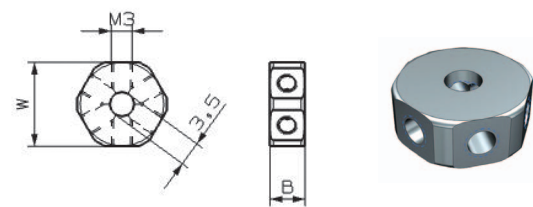
Cube - Titanium



QCI No.	W	B	Hole
03-3130-005TI	13	5	3.5

6-Face Cube

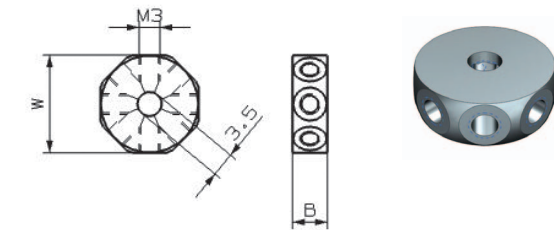
Cube - Titanium



QCI No.	W	B	Hole
03-3120-005TI	12	5	3.5

8-Face Cube

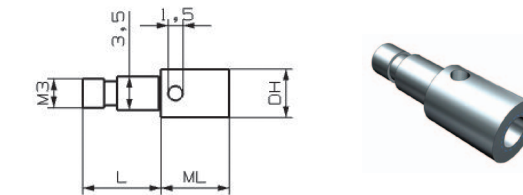
Cube - Titanium



QCI No.	W	B	Hole
03-3140-005TI	14	5	3.5

Tapped Holder for Cube

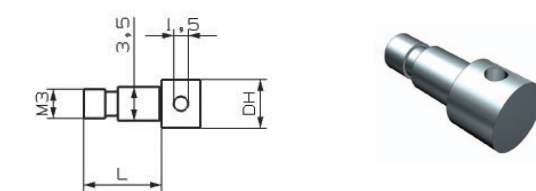
Base - Titanium



QCI No.	L	ML	Pin	Hole	DH
03-3035-007TI	8	7	3.5	M3	5

Holder for Cube

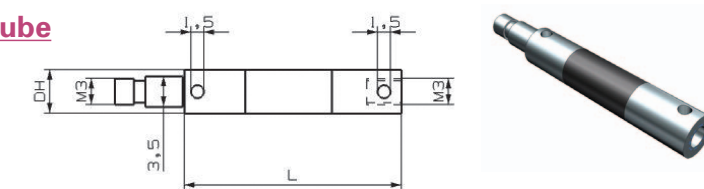
Base - Titanium



QCI No.	L	Pin	DH
03-3035-000TI	8	3.5	5

Extension Holder for Cube

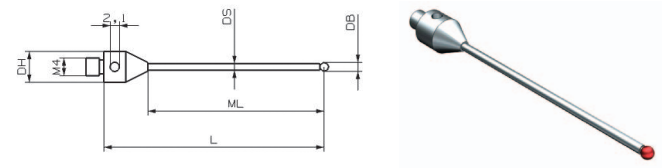
Base - Titanium
Shaft - Carbon Fiber



QCI No.	L	Pin	Hole	DH
03-3035-025CF	25	3.5	M3	5
03-3035-045CF	45	3.5	M3	5

Carbide Stylus

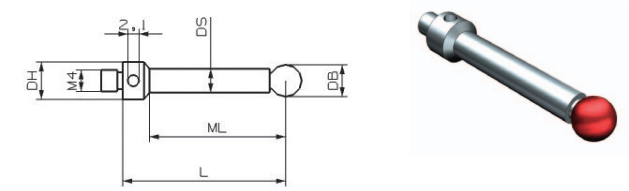
Base - Stainless Steel
Shaft - Tungsten Carbide
Tip - Ruby Ball



QCI No.	DB	L	ML	DS	DH	
01-4010-020STR	1	20	10	0.8	7	
01-4020-020STR	2	20	10	1.5	7	
01-4020-050STR	2	50	40	1.5	7	
01-4030-020STR	3	20	8.5	2	7	
01-4030-050STR	3	50	38.5	2	7	
01-4040-020STR	4	20	8.5	2	7	
01-4040-050STR	4	50	38.5	2	7	
01-4050-020STR	5	20	7.5	2.5	7	
01-4050-050STR	5	50	37.5	2.5	7	
01-4060-020STR	6	20	6.5	3	7	
01-4060-050STR	6	50	36.5	3	7	

Steel Stylus

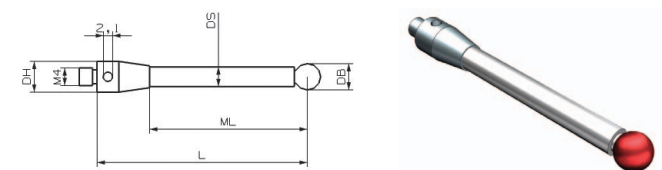
Base - Stainless Steel
Shaft - Stainless Steel
Tip - Ruby Ball



QCI No.	DB	L	ML	DS	DH	
01-4020-019SSR	2	19	8	1.5	7	
01-4030-019SSR	3	18.5	13	2	7	Tapered
01-4040-018SSR	4	18	13	3	7	
01-4050-010SSR	5	10	5	3	7	
01-4050-018SSR	5	17.5	12.5	3.5	7	
01-4050-020SSR	5	20	15	3	7	
01-4050-030SSR	5	30	25	3	7	
01-4050-050SSR	5	50	35	4.5	7	
01-4050-100SSR	5	100	83	4.5	7	
01-4050-150SSR	5	150	133	4.5	7	
01-4060-017SSR	6	17	13	4.5	7	
01-4080-016SSR	8	16	12.5	6	7	

Ceramic Stylus

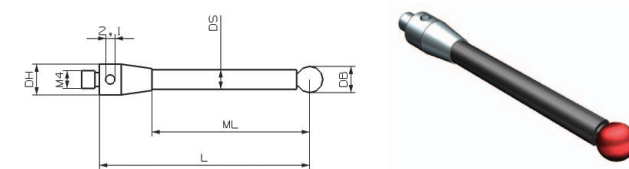
Base - Stainless Steel
Shaft - Ceramic
Tip - Ruby Ball



QCI No.	DB	L	ML	DS	DH	
01-4040-050SCE	4	50	33.5	3	7	
01-4050-050SCE	5	50	33.5	3.5	7	
01-4050-075SCE	5	75	58.5	3.5	7	
01-4050-100SCE	5	100	83.5	3.5	7	
01-4060-050SCE	6	50	38.5	4.5	7	
01-4060-075SCE	6	75	63.5	4.5	7	
01-4060-100SCE	6	100	88.5	4.5	7	
01-4080-050SCE	8	50	50	4.5	7	
01-4080-075SCE	8	75	75	4.5	7	
01-4080-100SCE	8	100	100	4.5	7	

Carbon Stylus

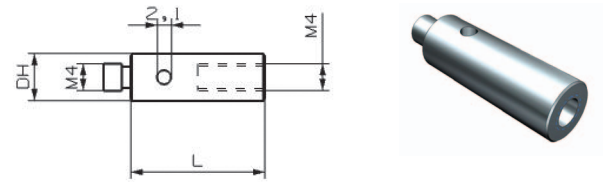
Base - Stainless Steel
Shaft - Carbon Fiber
Tip - Ruby Ball



QCI No.	DB	L	ML	DS	DH	
01-4060-050SCR	6	50	33.5	4.5	7	
01-4060-100SCR	6	100	83.5	4.5	7	
01-4060-150SCR	6	150	133.5	4.5	7	
01-4060-200SCR	6	200	183.5	4.5	7	

Steel Extension

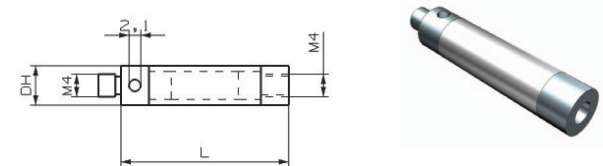
Base - Stainless Steel



QCI No.	L	DH
02-4070-010ST	10	7
02-4070-015ST	15	7
02-4070-020ST	20	7
02-4070-030ST	30	7

Ceramic Extension

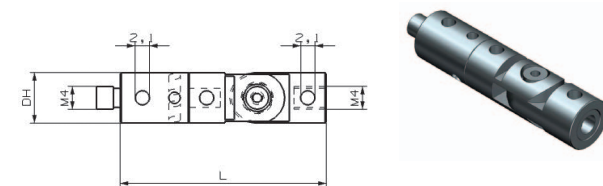
Base - Stainless Steel
Shaft - Ceramic



QCI No.	L	DS	DH
02-4070-030SCT	30	6	7
02-4070-050SCT	50	6	7
02-4070-100SCT	100	6	7
02-4070-200SCT	200	6	7

Rotary Knuckle Joint

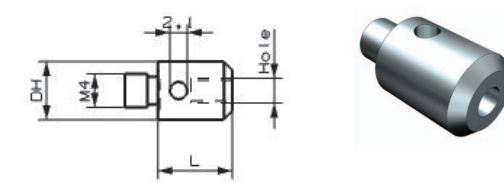
Body - Stainless Steel



QCI No.	L	DH
03-4060-033ST	33	9

Thread Converter

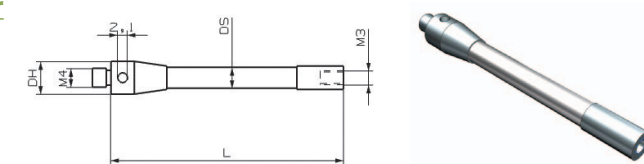
Body - Stainless Steel



QCI No.	Pin	Hole	L	DH
05-4070-005M2	M4	M2	5	7
05-4070-009M3	M4	M3	9	7
05-4110-010M5	M4	M5	10	11

Extended Thread Converter

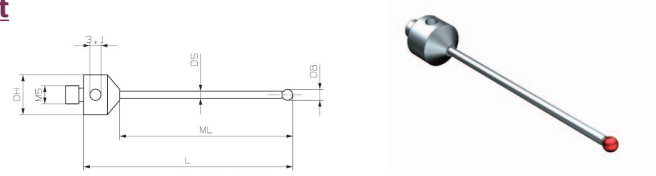
Base - Stainless Steel
Shaft - Ceramic



QCI No.	Pin	Holde	L	DS	DH
05-4070-050M3	M4	M3	50	4.5	7
05-4070-075M3	M4	M3	75	4.5	7
05-4070-100M3	M4	M3	100	4.5	7

Carbide Stylus, Straight Shaft

Base - Stainless Steel
 Shaft - Tungsten Carbide
 Tip - Ruby Ball

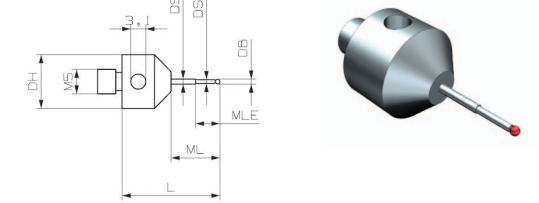


QCI No.	DB	L	ML	DS	DH
01-5015-033STR	1.5	33	23	1	11
*01-5015-040STR	1.5	40	30	1	11
01-5020-020STR	2	20	10	1	11
01-5020-025STR	2	25	15	1	11
01-5020-034STR	2	33.5	23.5	1.5	11
01-5020-040STR	2	40	30	1.5	11
01-5025-020STR	2.5	20	10	1.5	11
01-5025-034STR	2.5	34	24	1.5	11
01-5030-025STR	3	25	15	2	11
01-5030-034STR	3	33.5	23.5	2	11
01-5030-040STR	3	40	30	2	11
01-5030-050STR	3	50	40	2	11
01-5030-058STR	3	58	48	2	11
01-5030-075STR	3	75	65	2	11
01-5040-034STR	4	33.5	23.5	2	11
01-5040-050STR	4	50	40	2	11
01-5040-064STR	4	64	54	2	11
01-5050-050STR	5	50	40	3.5	11
01-5050-053STR	5	53	43	3.5	11
01-5050-075STR	5	75	65	3.5	11
01-5050-080STR	5	80	70	3.5	11
01-5050-090STR	5	75	65	3.5	11
01-5050-100STR	5	100	90	3.5	11
01-5060-054STR	6	54	44	3.5	11
01-5060-068STR	6	68	58	3.5	11
01-5080-064STR	8	63.5	46.5	6	11
01-5080-075STR	8	75	58	6	11
01-5080-100STR	8	100	83	6	11
01-5080-115STR	8	114.5	97.5	6	11
01-5080-150STR	8	150	133	6	11
01-5080-200STR	8	200	183	6	11

*는 사용에 제한이 있는 경우가 있으므로 확인 후 사용하시기 바랍니다.

Carbide Stylus, Stepped Shaft

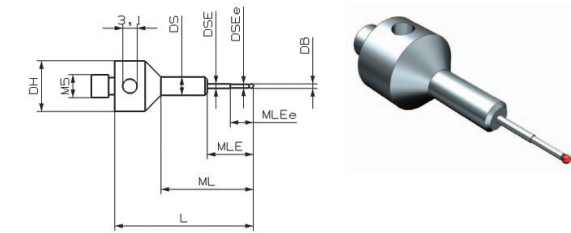
Base - Stainless Steel
 Shaft - Tungsten Carbide
 Tip - Ruby Ball



QCI No.	DB	L	MLE	ML	DSE	DS	DH
01-5003-022STR	0.3	21.8	2.3	11.8	0.2	1	11
01-5005-022STR	0.5	22	2.5	12	0.3	1	11
01-5008-023STR	0.8	22.3	4.8	12.3	0.6	1	11
01-5010-023STR	1	22.5	5	12.5	0.8	1	11

Carbide Stylus, Stepped Holder&Shaft

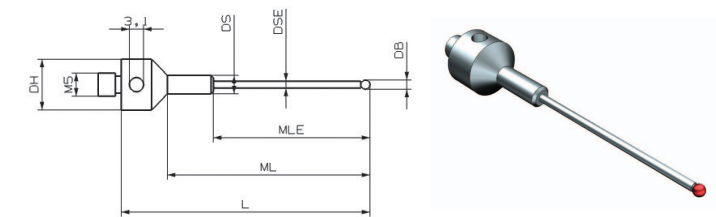
Base - Stainless Steel
 Shaft - Tungsten Carbide
 Tip - Ruby Ball



QCI No.	DB	L	MLEe/MLE	ML	DSEe/DSE	DS	DH
01-5005-032STR	0.5	32	2.5 / 12	22	0.3 / 1	4	11
01-5008-032STR	0.8	32	4.8 / 12	22	0.6 / 1	4	11
01-5010-032STR	1	32	5 / 12	22	0.8 / 1	4	11

Carbide Stylus, Stepped Holder

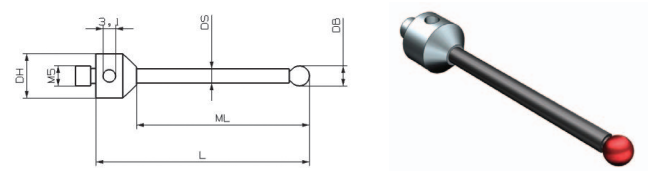
Base - Stainless Steel
 Shaft - Tungsten Carbide
 Tip - Ruby Ball



QCI No.	DB	L	MLE	ML	DSE	DS	DH
01-5015-032STR	1.5	32	12	22	1	4	11
01-5015-044STR	1.5	44	19	34	1	4	11
01-5020-032STR	2	32	12	22	1.5	4	11
01-5020-044STR	2	44	19	34	1.5	4	11
01-5020-058STR	2	58	33	48	1.5	4	11
01-5025-032STR	2.5	32	12	22	1.5	4	11
01-5025-044STR	2.5	44	19	34	1.5	4	11
01-5025-058STR	2.5	58	33	48	1.5	4	11

Carbon Stylus

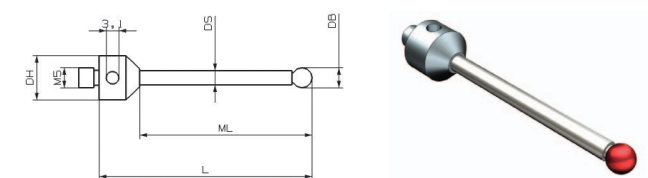
Base - Stainless Steel
 Shaft - Carbon Fiber
 Tip - Ruby Ball



QCI No.	DB	L	ML	DS	DH
01-5030-025SCR	3	25	15	2	11
01-5030-033SCR	3	33	23	2	11
01-5030-058SCR	3	58	48	2	11
01-5040-033SCR	4	33	23	2	11
01-5040-058SCR	4	58	48	2	11
01-5040-064SCR	4	64	54	2	11
01-5040-075SCR	4	75	65	2	11
01-5050-050SCR	5	50	40	3.5	11
01-5050-075SCR	5	75	65	3.5	11
01-5050-100SCR	5	100	90	3.5	11
01-5060-054SCR	6	54	44	3.5	11
01-5080-075SCR	8	75	58	6	11
01-5080-100SCR	8	100	83	6	11
01-5080-114SCR	8	114	97	6	11
01-5080-150SCR	8	150	133	6	11
01-5080-200SCR	8	200	183	6	11

Ceramic Stylus

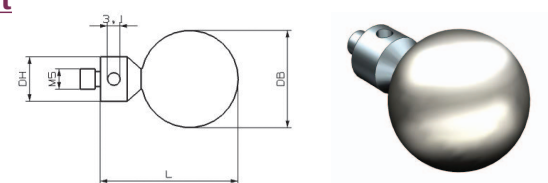
Base - Stainless Steel
 Shaft - Ceramic
 Tip - Ruby Ball



QCI No.	DB	L	ML	DS	DH
01-5050-053SCE	5	53	43	3.5	11
01-5060-054SCE	8	54	44	3.5	11
01-5080-064SCE	6	63.5	46.5	6	11
01-5080-115SCE	8	114.5	97.5	6	11

Ceramic Ball Stylus without Shaft

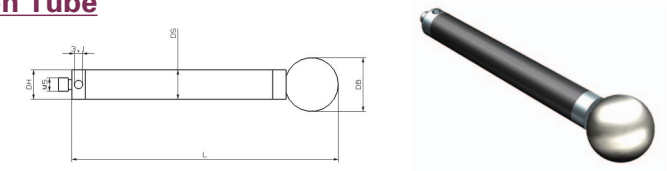
Base - Stainless Steel
 Shaft - Non
 Tip - Zirconia Ceramic Ball



QCI No.	DB	L	ML	DH
01-5250-001SC	25	38	38	11

Large Ball Stylus with Carbon Tube

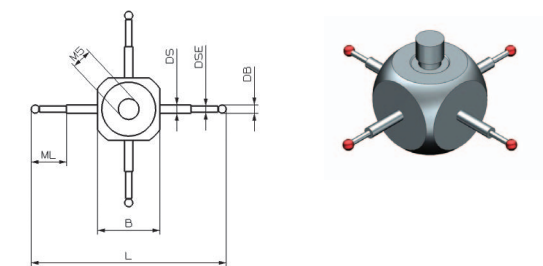
Base - Titanium
 Shaft - Carbon Fiber
 Tip - Zirconia Ceramic Ball



QCI No.	DB	L	DH
01-5200-200TCC	20	200	11
01-5200-300TCC	20	300	11
01-5250-200TCC	25	200	11
01-5250-300TCC	25	300	11

Star Stylus

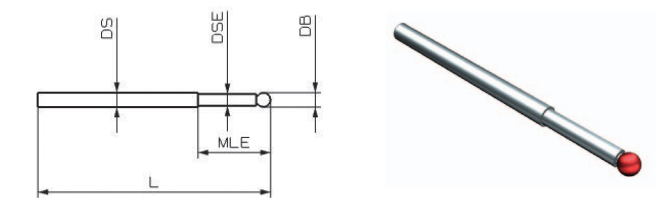
Base - Titanium Cube
 Shaft - Tungsten Carbide
 Tip - Ruby Ball



QCI No.	DB	L	B	ML	DSE	DS
01-5010-045TTR-STAR	1	45	15	7	0.8	2
01-5015-045TTR-STAR	1.5	45	15	7.5	1	2
01-5020-045TTR-STAR	2	45	15	7.5	1.5	2
01-5025-045TTR-STAR	2.5	45	15	8	1.5	2

Pin Stylus

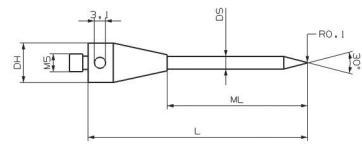
Shaft - Tungsten Carbide
 Tip - Ruby Ball



QCI No.	DB	L	ML	DSE	DS
01-0003-015TR	0.3	15.3	2.3	0.2	1
01-0005-016TR	0.5	15.5	2.5	0.3	1
01-0008-016TR	0.8	15.8	4.8	0.6	1
01-0010-016TR	1	16	5	0.8	1
01-0015-027TR	1.5	26.5			1
01-0020-027TR	2	27			1.5
01-0025-028TR	2.5	27.5			1.5
01-0030-038TR	3	38			2

Point Stylus

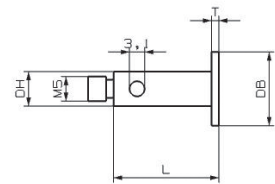
Base - Stainless Steel
 Shaft - Tungsten Carbide
 Tip - Ruby Ball



QCI No.	Ag1	L	ML	DS	DH
01-5000-061STTP	30°	61	39	3.5	11

Disc Stylus

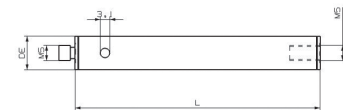
Base - Stainless Steel
 Shaft - Tungsten Carbide
 Tip - Ruby Ball



QCI No.	DB	L	T	DH
01-5100-022SSC	10	21.5	1.5	7
01-5150-022SSC	15	21.5	1.5	7
01-5150-040SSC	15	40	1	7
01-5200-060SSC	20	60	1	7

Aluminum Extension

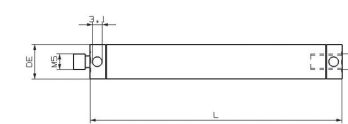
Base - Stainless Steel
 Shaft - Aluminium



QCI No.	L	DE
02-5110-040SAL	40	11
02-5110-060SAL	60	11
02-5110-080SAL	80	11
02-5110-100SAL	100	11
02-5110-120SAL	120	11
02-5200-040SAL	40	20
02-5200-060SAL	60	20
02-5200-080SAL	80	20
02-5200-100SAL	100	20
02-5200-150SAL	150	20
02-5200-200SAL	200	20

Carbon Extension

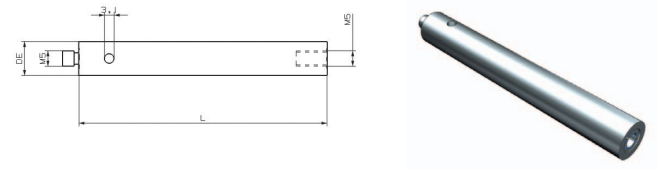
Base - Titanium
 Shaft - Carbon Fiber



QCI No.	L	DE
02-5110-040TCF	40	11
02-5110-050TCF	50	11
02-5110-060TCF	60	11
02-5110-070TCF	70	11
02-5110-080TCF	80	11
02-5110-090TCF	90	11
02-5110-100TCF	100	11
02-5110-120TCF	120	11
02-5110-150TCF	150	11
02-5110-180TCF	180	11
02-5110-200TCF	200	11
02-5110-250TCF	250	11
02-5110-300TCF	300	11
02-5110-400TCF	400	11
02-5200-040TCF	40	20
02-5200-050TCF	50	20
02-5200-060TCF	60	20
02-5200-080TCF	80	20
02-5200-100TCF	100	20
02-5200-120TCF	120	20
02-5200-150TCF	150	20
02-5200-180TCF	180	20
02-5200-200TCF	200	20
02-5200-250TCF	250	20
02-5200-300TCF	300	20
02-5200-400TCF	400	20
02-5200-500TCF	500	20
02-5200-600TCF	600	20

Steel Extension

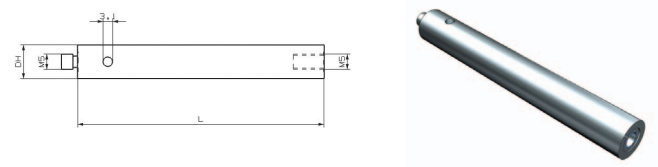
Base - Stainless Steel



QCI No.	L	DE
02-5110-010ST	10	11
02-5110-015ST	15	11
02-5110-020ST	20	11
02-5110-040ST	40	11
02-5110-060ST	60	11
02-5110-080ST	80	11
02-5110-100ST	100	11

Titanium Extension

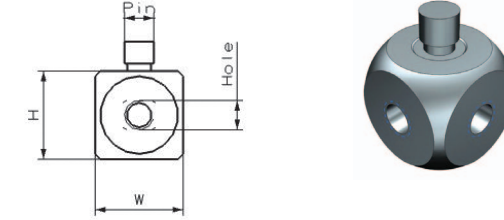
Base - Titanium



QCI No.	L	DE
02-5110-010TI	10	11
02-5110-015TI	15	11
02-5110-020TI	20	11
02-5110-025TI	25	11
02-5110-030TI	30	11
02-5110-040TI	40	11
02-5110-050TI	50	11
02-5110-060TI	60	11
02-5110-075TI	75	11
02-5110-080TI	80	11
02-5110-090TI	90	11
02-5110-100TI	100	11
02-5110-120TI	120	11
02-5110-150TI	150	11

4-Face Cube

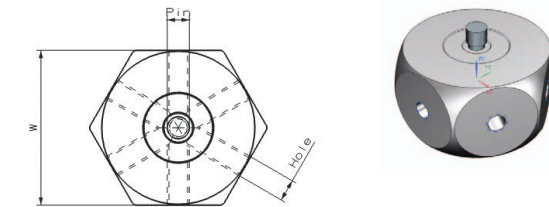
Cube - Titanium



QCI No.	Pin	H	Hole	W
03-5150-150TI	M5	15	M5	15
03-5200-200TI	M5	20	M5	20
03-5150-150TI-M3	M5	15	M3	15

6-Face Cube

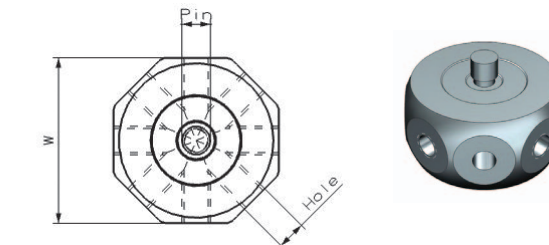
Cube - Aluminium



QCI No.	Pin	H	Hole	W
03-5350-200AL-7	M5	20	M5	34.6

8-Face Cube

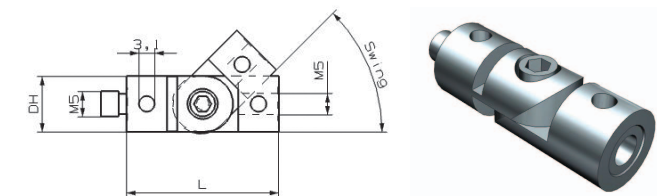
Cube - Titanium



QCI No.	Pin	H	Hole	W
03-5290-150TI-9	M5	15	M5	29

Knuckle Joint

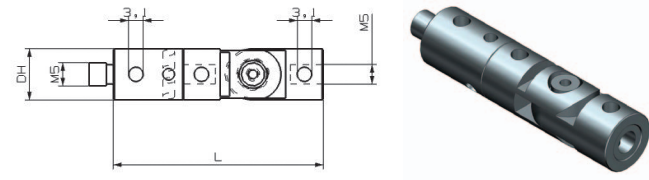
Body - Titanium



QCI No.	L	DH
03-5110-030TI	30	11
03-5180-036TI	36	18

Rotary Knuckle Joint

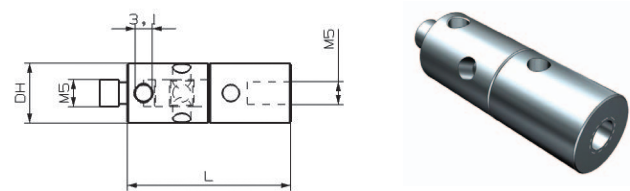
Body - Titanium



QCI No.	L	DH
03-5110-045TI	45	11

Rotary Joint

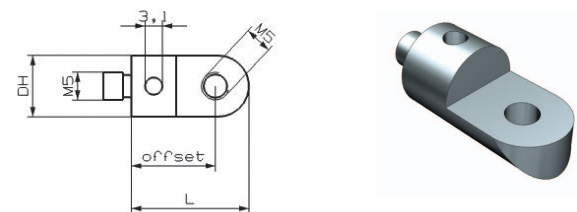
Body - Titanium



QCI No.	Pin	L	Hole	DH
03-5110-031TI	M5	30	M5	11
03-5180-031TI	M5	30	M5	18

Angle Holder

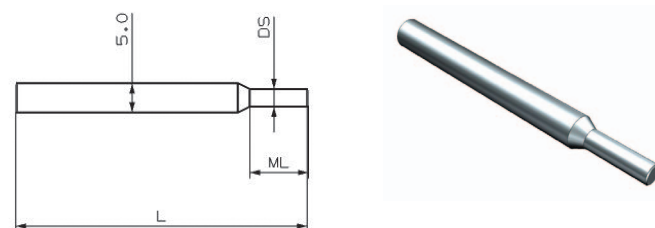
Body - Titanium



QCI No.	Pin	L	Offset	Degree	DH
03-5110-021TI	M5	21	15	90	11

Wrench

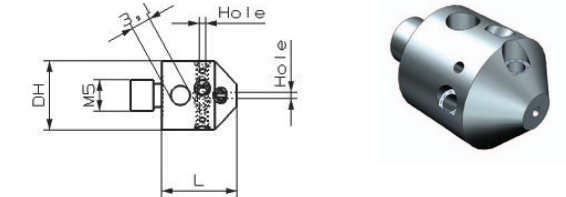
Body - Stainless Steel



QCI No.	DH	L	DS	ML
03-5000-055ST	5	55	3	5

Holder For Pin Stylus

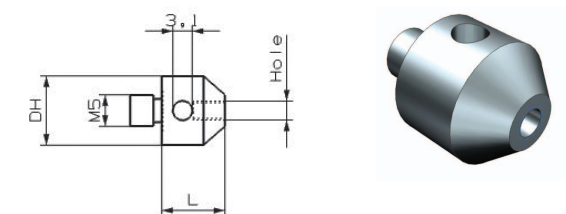
Body - Stainless Steel



QCI No.	Pin	L	Hole	DH
03-5110-012H1	M5	10	1	11
03-5110-012H1.5	M5	10	1.5	11
03-5110-012H2	M5	10	2	11

Thread Converter

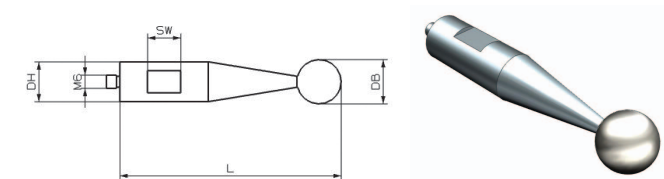
Body - Stainless Steel



QCI No.	Pin	L	Hole	DH
05-5110-090M4	M5	10	M4	11
05-5110-090M3	M5	10	M3	11
05-5110-090M2	M5	10	M2	11

Reference Sphere

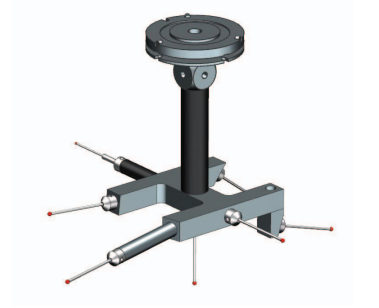
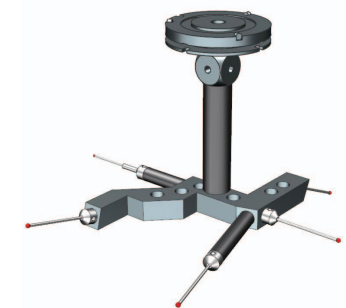
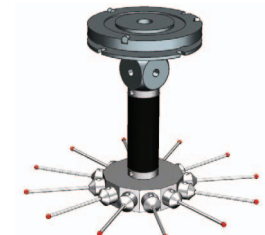
Base - Stainless Steel
Shaft - Stainless Steel
Tip - Zirconia Ceramic Ball



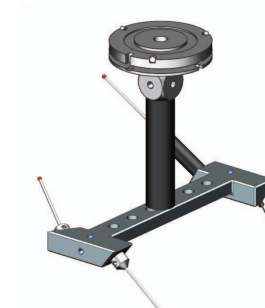
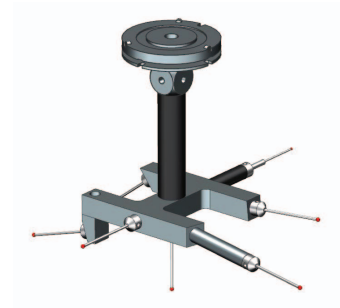
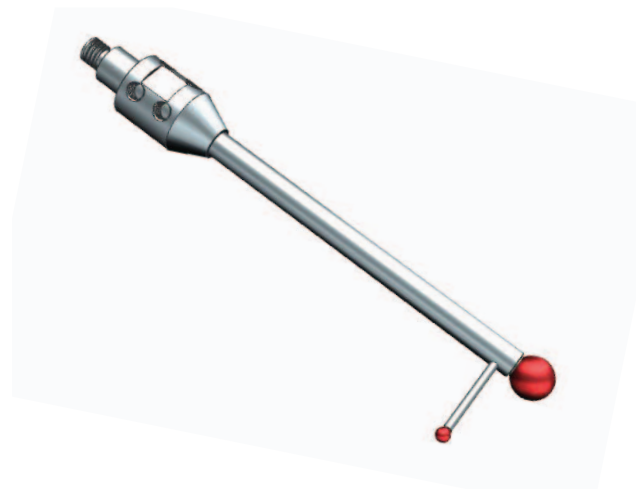
QCI No.	DB	L	Pin	DH
16-9999-020CE	20	100	M6	18
16-9999-025CE	25	100	M6	18
16-9999-030CE	30	100	M6	18

Stylus for FARO ARM

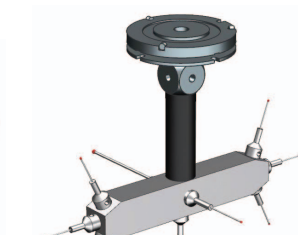
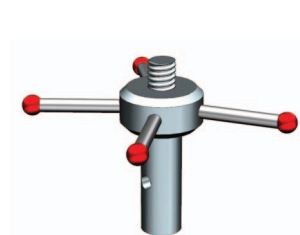
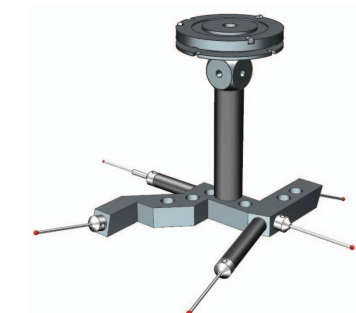
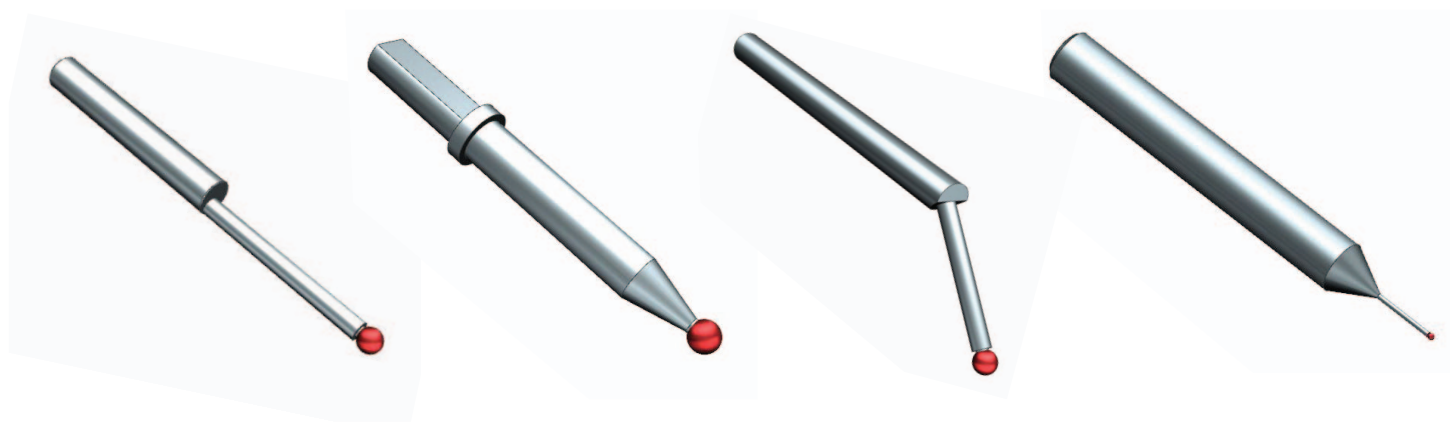
Stylus for special



Stylus for BLUM



Stylus for 2D Equipment



본 카탈로그에 명시된 제품의 규격과 사양은 예고없이 변경 될 수 있으므로 양해 부탁드립니다.

All Product in Catalog, Product Specifications and data are subject to change without prior notice.

